

LIBRARY
PROJECTS
2008

LAMMHULTS



Kullisselager 1



TO BE CONTINUED

Continual flow is a theme that comes to the fore again and again in this year's edition of Projects.

For example in the new library at Hjørring in Denmark where rooms and departments are linked by a red thread – sometimes functional, sometimes a virtual artery – winding its way high and low through the building, spreading oxygen and energy.

Continual flow also permeates Lammhults Library Design, the new name of BCI and Eurobib.

It's a constant flow of expressive and innovative design, a continual searching for new ideas and shapes, with an equally strong commitment to quality, care of the environment, to understanding ecology and providing sustainable solutions.

This has led to us becoming world leaders in the fit out of library interiors.

We have more than 60 years experience in the field and are committed to continuity and further development for libraries worldwide, and we mean to keep it that way.

Welcome to the world of Lammhults Library Design and a selected look at projects with which we have been engaged in 2008.

IRELAND

**SOUTH
DUBLIN**
PUBLIC LIBRARY



County architect
EDDIE CONROY FRIAI
Project architect
JILLIAN GERAGHTY MRIAI
Shelving
SLIMLINE SHELVING SYSTEM

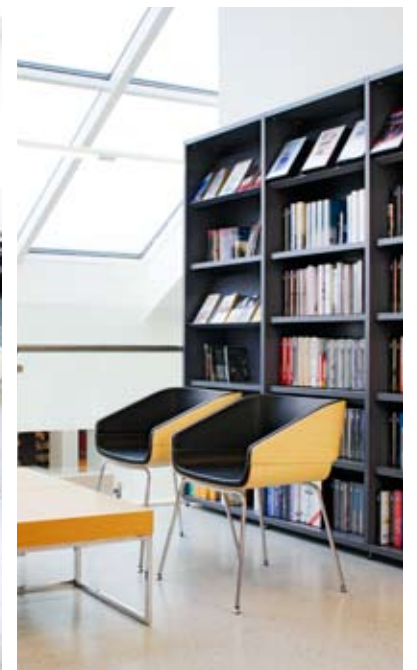


South Dublin County Library in Tallaght reopened during the year after extension and renovation.

The library won Best Public Building category in the latest awards by the Local Authority Members Association (Lama).

It is one of Ireland's largest libraries with 100,000 books, magazines, CDs and DVDs.

The brief for the shelving was specific in terms of both aesthetics and function. A system was required in various sizes and configurations to provide an aesthetic far removed from the dated natural timber look of the preceding fit-out. It was also essential that the shelving should not resemble flat-pack or domestic furniture.



FRANCE

PUTEAUX

PUBLIC LIBRARY



Architect
ESTELLE MEGE,
EXTREMES LATITUDES

Shelving
CLASSIC STEEL
SHELVING SYSTEM



Puteaux is a municipality on the western edge of Paris, well known for the business district La Défense, with its high rise office blocks and famous Grande Arche.

Le Palais de la Médiathèque replaces the old central library and is located in the heart of the area. With its characteristic curved arch and glass façade, the building respectfully and definitively reflects its surroundings.

More than 2,850 square metres house 120,000 items in a great number of different media formats.

With its modern profile and public accessibility, Le Palais de la Médiathèque aims to strengthen social links and expand communication between the generations.

A specially developed version of Classic Steel Shelving System, with rounded shelving elements, forms the basis for display and storage of media.





DENMARK

HJØRRING
PUBLIC LIBRARY

Architect
SCHMIDT/HAMMER/LASSEN
ARCHITECTS
Interior design
BOSCH & FJORD/BCI
Shelving
CLASSIC STEEL
SHELVING SYSTEM





This has been described as Denmark's most exciting library and was named one of Europe's best libraries by NAPLE, National Authorities on Public Libraries in Europe.

The new 5,000 square metre central library in Hjørring forms part of the Metropol shopping centre. The intention of visual artists Bosch & Fjord was to make this "the pivotal point of the town". The whole idea of the library is to encourage playfulness and surprise. Above all, it is a place To Be. The furniture signals where you should be quiet and where you're permitted to make a noise.

A physical message transmission theme in the form of an inspired red vein leads the visitor through the entire library as a structural element of the decor at times or otherwise in the form of a shelf, display surface or even a seat.







KUWAIT

KUWAIT CITY

STATE AUDIT BUREAU



Project Management
ASSOCIATED ENGINEERING
PARTNERSHIP, KUWAIT
Shelving
GOTHIA SHELVING SYSTEM



When Kuwait's constitution was drawn up in 1962, there was a directive too for the formation of an independent state body to oversee financing. Two years later the State Audit Bureau was set up.

Its new head office in Kuwait City contains, in addition to administrative departments, a library and archive.

Scandinavian design was chosen for this, with a feel for wood in the form of the Gothia Shelving System, with glass end panels and stained wooden detail.

In the reception area, there is a Concertina counter with wooden facade and in the reading room, a Read study table, supplied by Lammhults Library Design.



الجريدة

الصباح

القباص

الرأي

السياسة

مبارك: أبلغنا أميركا مخاوفنا من تسلح العراق

جلسة طارئة لاعتماد عضوية العنزي وحماد

DENMARK

HOLSTED

PUBLIC LIBRARY

Architect
KNIPPEL ARKITEKT MAA
Interior design
PETER LARSEN/BCI
Shelving
EXPERIENCE
SHELVING SYSTEM

Medius Holsted is a large sports complex in the town centre. Here, the ambition was to create a multi-purpose establishment – to offer inhabitants both a sporting and cultural choice.

One of the latest additions to the complex is Holsted Public Library which now forms a hub along with the various sports venues, places where people can meet, a gym, a café and much more.

The point of departure in creating the library was to emphasize its role as part of a joint cultural and leisure facility.

The shelving reflects these ambitions. With the congenial Experience system, a dynamic is added to the library, creating rooms within rooms.



NORWAY

RAUFOSS
PUBLIC LIBRARY



Architect
KNUT REITEN,
JRMARKITEKTER
Interior design
MONICA SYVERSEN,
BS EUROBIB
Shelving
IMPEX SHELVING SYSTEM



The library in Raufoss, principal town of the municipality of Vestre Toten in Norway, is housed in a building dating back to the late 1970s. Both the premises and their contents were in need of an update.

The library's ambition was that the building should encourage people to read and discover its collections. This is reflected by the investment in presentation and display. Furniture from Lammhult Library Design helps stimulate curiosity and a desire to read.

The shelving system is Impex, complemented by display furnishings from Opening the Book. In order to create a good environment for listening to talking books and music, Luna sound chairs have been placed strategically throughout the library.





FRANCE

QUIMPER

MEDIA LIBRARY



Architect
MARC ISEPPi
Shelving
CLASSIC STEEL AND
FRONTLINE SHELVING SYSTEM



Quimper is a town in north western France renowned for its 13th century Gothic cathedral and for its pottery and porcelain, manufactured there since the 17th century.

An Ursuline convent dating from the 18th century has this year been given a modern extension. The convent has been transformed into a media library and the original 4,000 square metre surface has been increased by 2,500 square metres to house a collection of books and documents amounting to around 120,000 items.

Two of the media library's rooms contain very ancient, rare books and here use has been made of the Frontline Shelving System in beech.

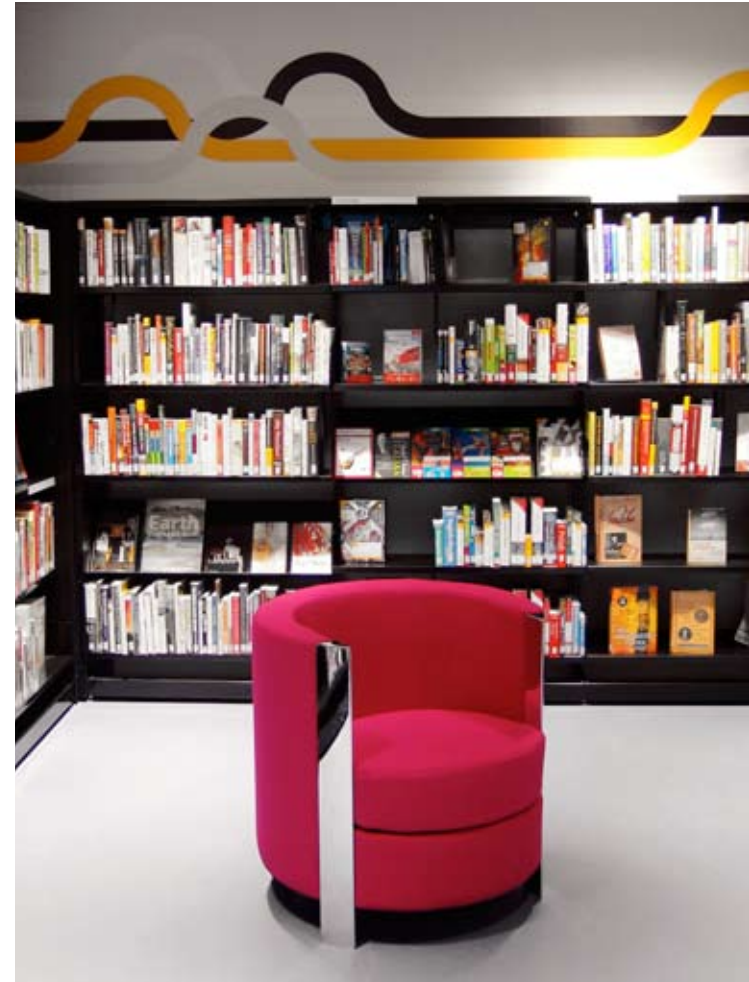
The public sections feature the Classic steel shelving system with an integrated lighting system that illuminates each shelf.

SCOTLAND

POLLOK
PUBLIC LIBRARY



Architect
DAVIS DUNCAN ARCHITECTS
Interior design
CURIOUS GROUP
Shelving
CLASSIC STEEL
SHELVING SYSTEM





Pollok is a residential area south west of Glasgow which has undergone extensive revitalisation in recent years. It now houses Scotland's largest shopping centre and close to it a new community complex in the shape of the Pollok Library and Leisure Centre.

In the foyer of the library visitors encounter giant letters set in the floor, an immediate challenge to "read". The focal point is a rounded section of bookshelves built by Classic steel shelving system. The library offers many varieties of media and modern graphics are used to get the message across. Inscriptions set in the walls invite you to "Think", "Relax", "Browse" and "Inspire".

For storage and display of books and media, Classic steel shelving system was used with London end panels.

FRANCE

STRASBOURG
PUBLIC LIBRARY



Architect
JEAN-MARC IBOS
& MYRTO VITART
Shelving
CLASSIC STEEL
SHELVING SYSTEM



Photo by Philippe Ravalet

The transformation of the Seegmuller warehouse into a library required a doubling of surface area. A fragile equilibrium had to be maintained.

The silo was preserved, forming a very visible vertical sign to mark the entrance to the site from the old town. The main hall abuts this magnificent concrete structure. The floors of the extension link with those already in existence, freeing up large amounts of space for the library.

From the former market hall, signals a little like tags guide the visitor towards the upper floors. A long, red ribbon winds through the building linking floors which might otherwise be disassociated from the public space. Industrial logic has been followed, with utility fittings left visible. Fluidity permeates the otherwise linear nature of these premises.

Shelving is in both Classic Steel Shelving System and custom made.



Photo by Georges Fessy

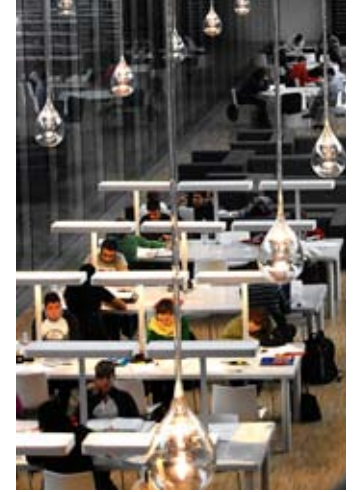


Photo by Georges Fessy

SPAIN

TENERIFE

PUBLIC LIBRARY



TEA – Tenerife Espacio de las Artes – is the latest addition to the cultural infrastructure in Tenerife.

The ambitious project, designed by the Swiss architects Jacques Herzog and Pierre de Meuron in cooperation with the Spanish architect Virgilio Gutierrez, aspires to be a reflection of contemporary art, influenced by new technologies.

The building is located in Santa Cruz's restored old quarter, on the north east coast of Tenerife. The interior is deliberately designed to stimulate sensations and movement by expanding dynamic spaces towards the exterior, allowing a natural source of light to flow throughout the entire building.

TEA is a multi functional exhibitions centre which combines different spaces and activities for social interaction and aims to promote artistic creation and thought on contemporary forms of art and culture. It also houses Tenerife's main library.

Total area is 20,622 square metres. The library occupies one fourth of this.

The library features the Opal Shelving System in white and without end panels to promote a light expression.

Architect

HERZOG & DE MEURON/
VIRGILIO GUTIERREZ

Shelving

OPAL SHELVING SYSTEM



INDEX

Country	Town	Project	Shelving System	Architects/Interior design	Page
Ireland	South Dublin	Public Library	Slimline	Eddie Conroy FRIAI Jillian Geraghty MRIAI	4
France	Puteaux	Public Library	Classic Steel	Estelle Mege, Extremes Latitudes	6
Denmark	Hjørring	Public Library	Classic Steel	Schmidt/Hammer/Lassen Bosch & Fjord, BCI	8
Kuwait	Kuwait City	State Audit Bureau	Gothia	Associated Engineering Partnership Kuwait	12
Denmark	Holsted	Public Library	Experience	Knippel Arkitekt MAA Peter Larsen/BCI	14
Norway	Raufoss	Public Library	Impex	Knut Reiten/JRM Arkitekter Monica Syversen, BS Eurobib	16
France	Quimper	Media Library	Classic Steel Frontline	Mark Iseppi	18
Scotland	Pollok	Public Library	Classic Steel	Davis Duncan Architects Curious Group	20
France	Strasbourg	Public Library	Classic Steel	Jean-Marc Ibos Myrto Vitart	22
Spain	Santa Cruz Tenerife	Public Libray	Opal	Herzog & de Meuron Virgilio Gutierrez	24



Vuoksi
Fagpaper
01 - 01

Vuoksi
Fagpaper
02 - 02

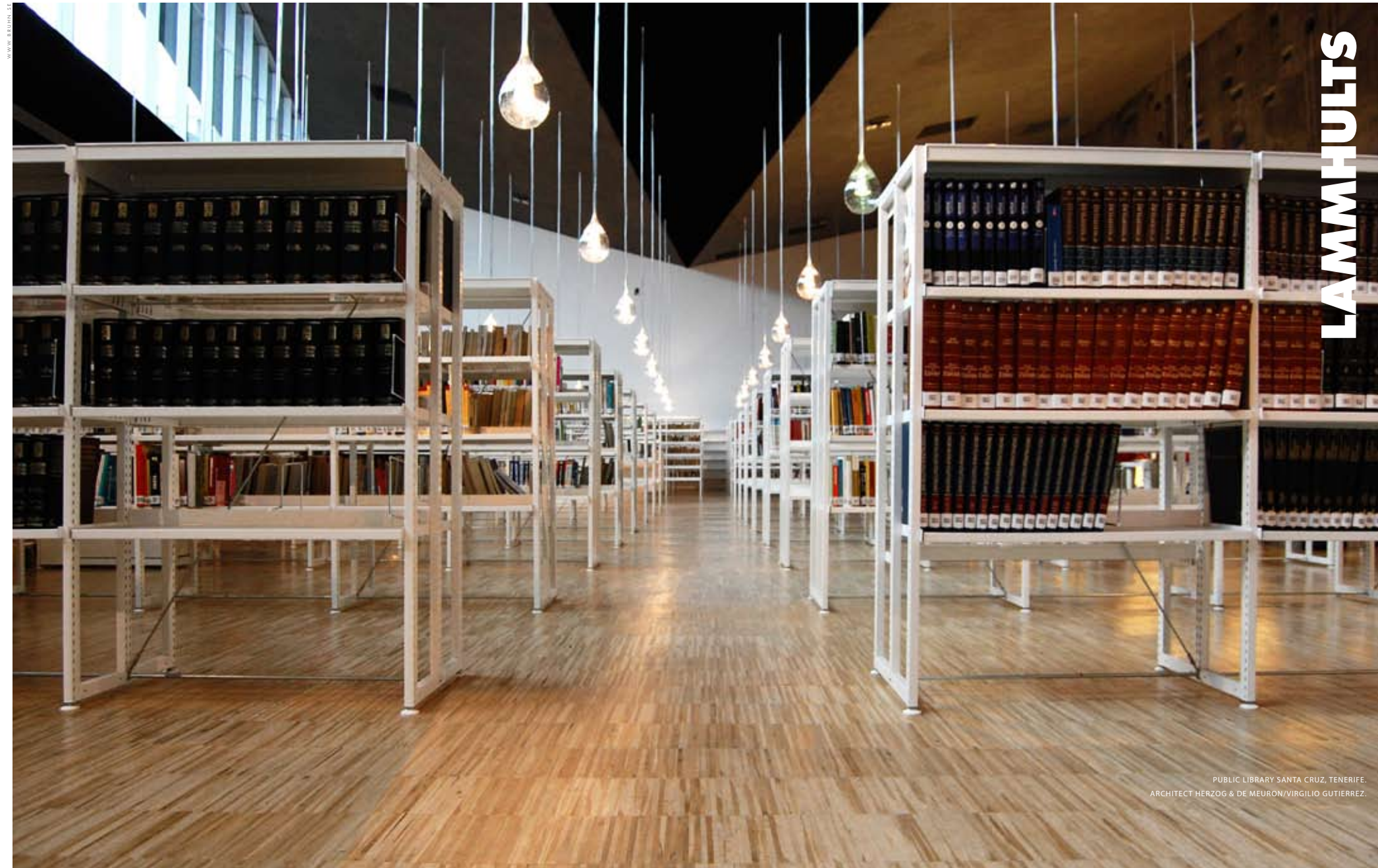
Vuoksi
Fagpaper
03 - 03

Vuoksi
Fagpaper
04 - 04

Vuoksi
Tegemiseid
Suhakirjut

Vuoksi

Revi
Vuoksi
Fagpaper



www.lammhults.com

LAMMHULTS

PUBLIC LIBRARY SANTA CRUZ, TENERIFE.
ARCHITECT HERZOG & DE MEURON/VIRGILIO GUTIERREZ.

LAMMHULTS LIBRARY DESIGN
www.lammhultslibrarydesign.com
Part of Lammhults Design Group



BCI